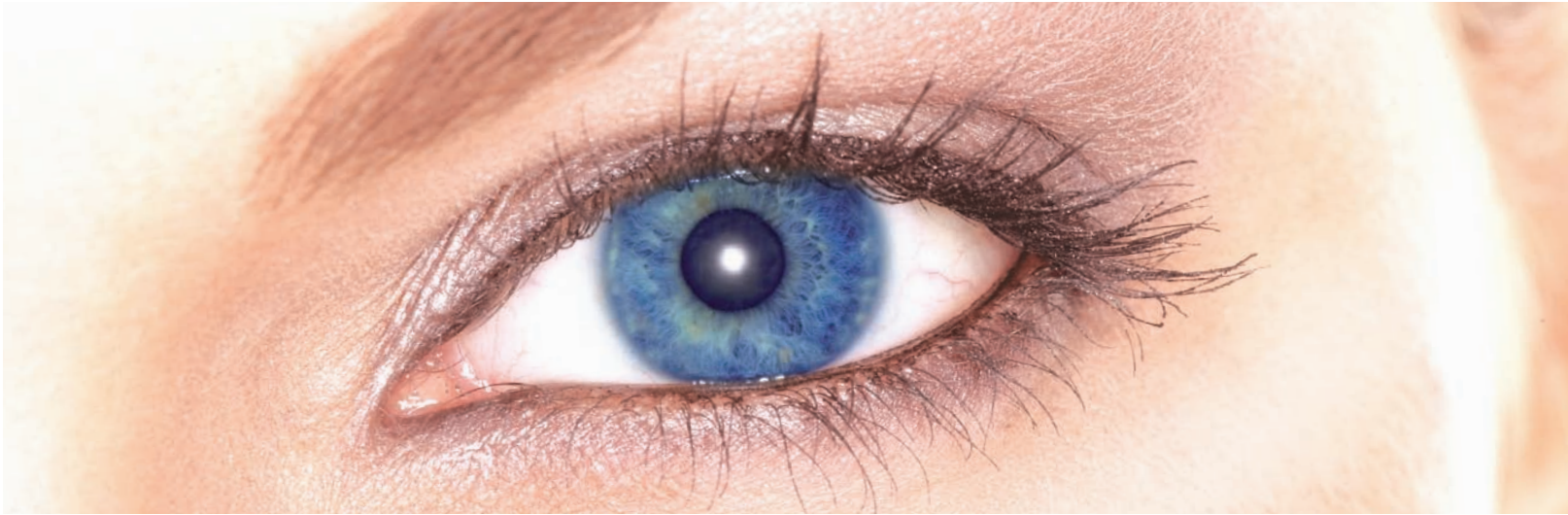


Spotlight Topical Ingredients

Know ...



... How!

DOW CORNING

Dow Corning® Topical Silicone Ingredients for Consumer Healthcare and Medical Device Applications

Accelerate the development of your consumer healthcare and topical medical device formulations with a new, broad range of silicone-based ingredients.

Dow Corning® Topical Ingredients have unique features allowing you to develop innovative solutions to serve the consumer healthcare and medical device market in product forms like barrier creams, breathable lotions, aqueous gels, anhydrous ointments and sprays.

Dow Corning® silicone-based ingredients will help you to make your formulation easier to apply and very pleasant to use, thus increasing consumer acceptance and satisfaction.

These come along with appropriate regulatory documentation, specifications and with proven aesthetics and functional film characteristics.

To ensure consistent high quality, *Dow Corning® Topical Ingredients* are manufactured at defined manufacturing sites with the appropriate healthcare oversight and audits.

Dow Corning uses its comprehensive knowledge and proven expertise in regulatory affairs to offer a complete **Ingredient Information Package (IIP)** aligned with the requirements of the consumer healthcare and medical device market.



LifeScience – Pharma

Dow Corning® Silicones
 can help you create new solutions to pleasantly
 and rapidly improve skin problems

- **Reputable**
- **Affordable**
- **Easier**
- **Faster**
-

Quality:

Manufacturing Site

Defined manufacturing site (Healthcare oversight / audit)
 Qualification:

- ISO 9001:2008
- Traceability, Change Control
- Single-lot Selection, Contamination Control

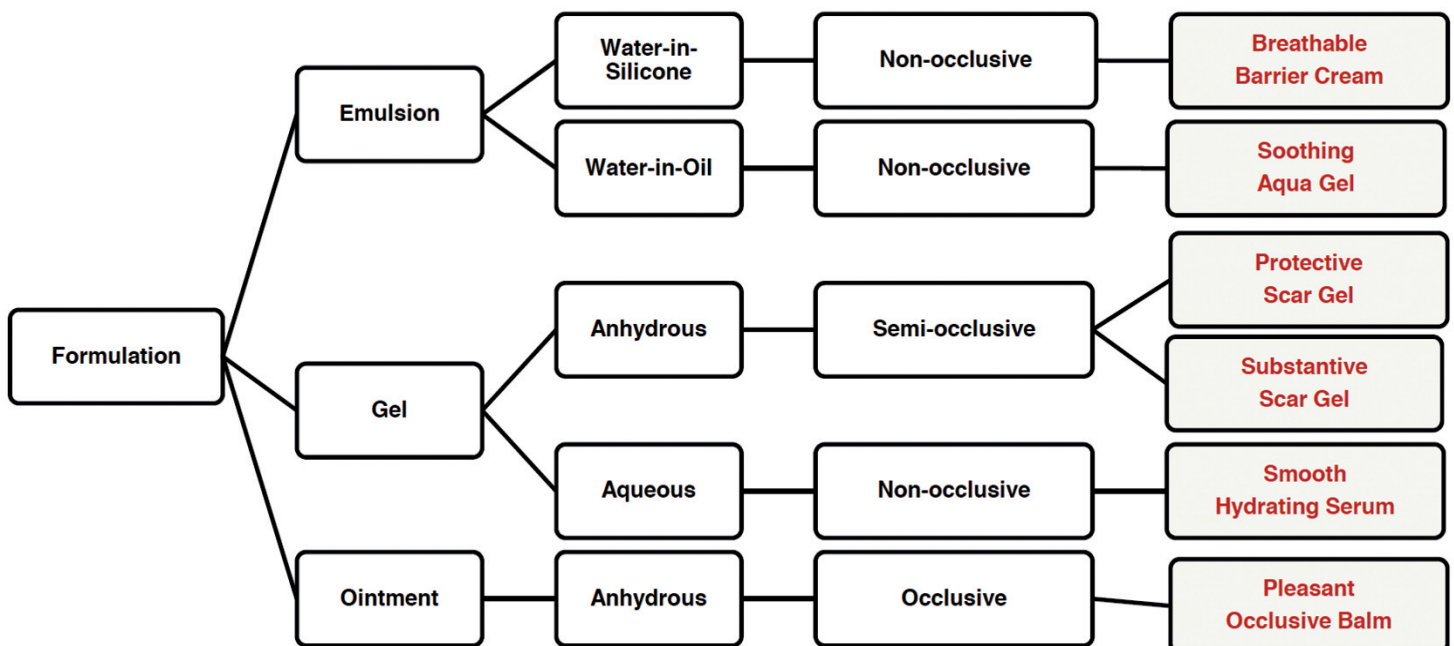
Quality and Regulatory Documentation

Ingredient Information Package (IIP):

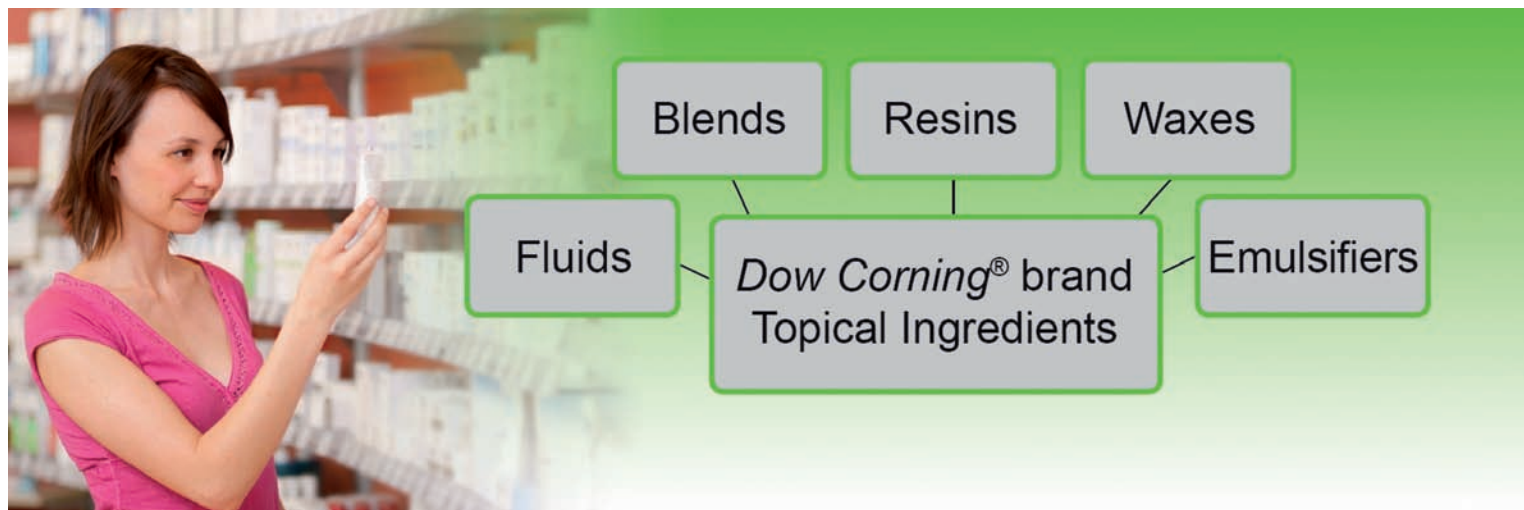
- Ingredient Regulatory Information (IRI)
- Elemental Impurities (EI)
- Summary of Health Data or Opinion Letter

Formulations:

Dow Corning offers support with a collection of prototype silicone-based formulations for topical ingredients, including performance tests and perception panels.



LifeScience – Pharma



Fluids: Volatile Carrier/Emollient

<p>TI-1050 Fluid, 1,5 cSt</p> <p>Fast evaporation rate Excellent spreading Non-occlusive Smooth & non-greasy feel</p>	<p>Carrier for spray Solvent Spreading agent</p>
<p>TI-1050 Fluid, 5 - 10 cSt</p> <p>Lubricity Water repellency Non-occlusive Smooth & tack-free skin feeling</p>	<p>Spreading agent Lubricant Emollient</p>
<p>TI-1050 Fluid, 50 - 1000 cSt</p> <p>Non-occlusive Substantive Water repellency Non-greasy skin feeling</p>	<p>Spreading agent Lubricant Emollient</p>
<p>TI-1050 Fluid, 30000 - 100000 cSt</p> <p>Non-occlusive Water repellency Substantive</p>	<p>Film forming agent Lubricant Emollient</p>

Specialty Fluids: Carrier / Solvent

<p>TI-2011 SPE Specialty Fluid</p> <p>Foam-builder Wetting agent Humectant</p>	<p>Solubilizer & compatibilizer for active ingredients Emollient Dispersant</p>
<p>TI-2021 AMS Specialty Fluid</p> <p>Moderate volatility Non-occlusive Reduces greasy & tacky feel of organic oils Smooth & light after-feel</p>	<p>Spreading agent Dispersant for hydrophobic powder Compatibilizer for silicone with organic oil</p>

LifeScience – Pharma

Blends:	Emollient
<p>TI-3011 Gum Blend</p> <p>Long lasting Non-occlusive Smooth feel Wash-off resistance</p>	<p>Film forming agent Barrier film Lubricant</p>
<p>TI-3021 Silicone Elastomer Blend</p> <p>Non-occlusive Substantive Improve of sensory feel in formulations (smooth, non-greasy, non-tacky)</p>	<p>Rheology modifier Thickener for anhydrous gel and W/O emulsion</p>
Wax:	Structuring Agent
<p>TI-4021 Semi-Occlusive Wax</p> <p>Semi-occlusive Wash-off resistance Broad compatibility with silicone and organics</p>	<p>Rheology and texture modifier Structuring agent</p>
Emulsifier:	Emulsifier
<p>TI-6021 Formulation Aid</p> <p>Silicone emulsifier Non-diluted material Formulation flexibility with a broad range of silicones and organic oil phases</p>	<p>Versatile emulsifier for W/O and W/Si emulsion Provides low viscosity emulsions Hot and cold processing</p>
Resins:	Film Former
<p>TI-7012 Solid Resin</p> <p>Solventless Excellent wash-off resistance Sebum resistance Long lasting Non-occlusive</p>	<p>Film forming agent Permeable barrier film</p>
<p>TI-7021 Silicone Resin Blend</p> <p>Excellent wash-off resistance Ease of formulation Non-occlusive Substantive</p>	<p>Film forming agent Permeable film</p>

Biesterfeld Spezialchemie - Your Bridge to Chemical Specialties in Europe

IMPRINT:

Published by:
Biesterfeld Spezialchemie GmbH - Life Science Pharma
Ferdinandstrasse 41 - 20095 Hamburg, Germany
Tel.: +49 40 32008-710 or -252 - Fax: +49 40 32008-696
healthcare@biesterfeld.com
Our raw material information, data and graphics was obtained from the records of our raw material suppliers.



Disclaimer:

We shall not be liable for the suitability of the goods for the purpose intended by Customer, unless the achievement of a certain outcome of the utilisation was expressly incorporated into the contract. Our advice, information or recommendations regarding application shall be provided to the best of our knowledge. As the actual application is beyond our scope of influence, and as the circumstances of such application are not completely foreseeable, written and verbal indications, suggestions etc. can only be provided on a non-binding basis. They shall in particular not release Customer from the obligation to examine our products and goods for their suitability with regard to the intended processes and purposes.